

## BEMAßTER GRUNDRISS

Kaiserdamm 36, 14057 Berlin  
Eigentumswohnung  
3. OG Mitte  
WE 28

**Gemessene Grundrissfläche: 43,48 m<sup>2</sup>**

Stockwerke: 1

Berlin, 02.12.2022

Ort, Datum

Carsten Waberski

Name

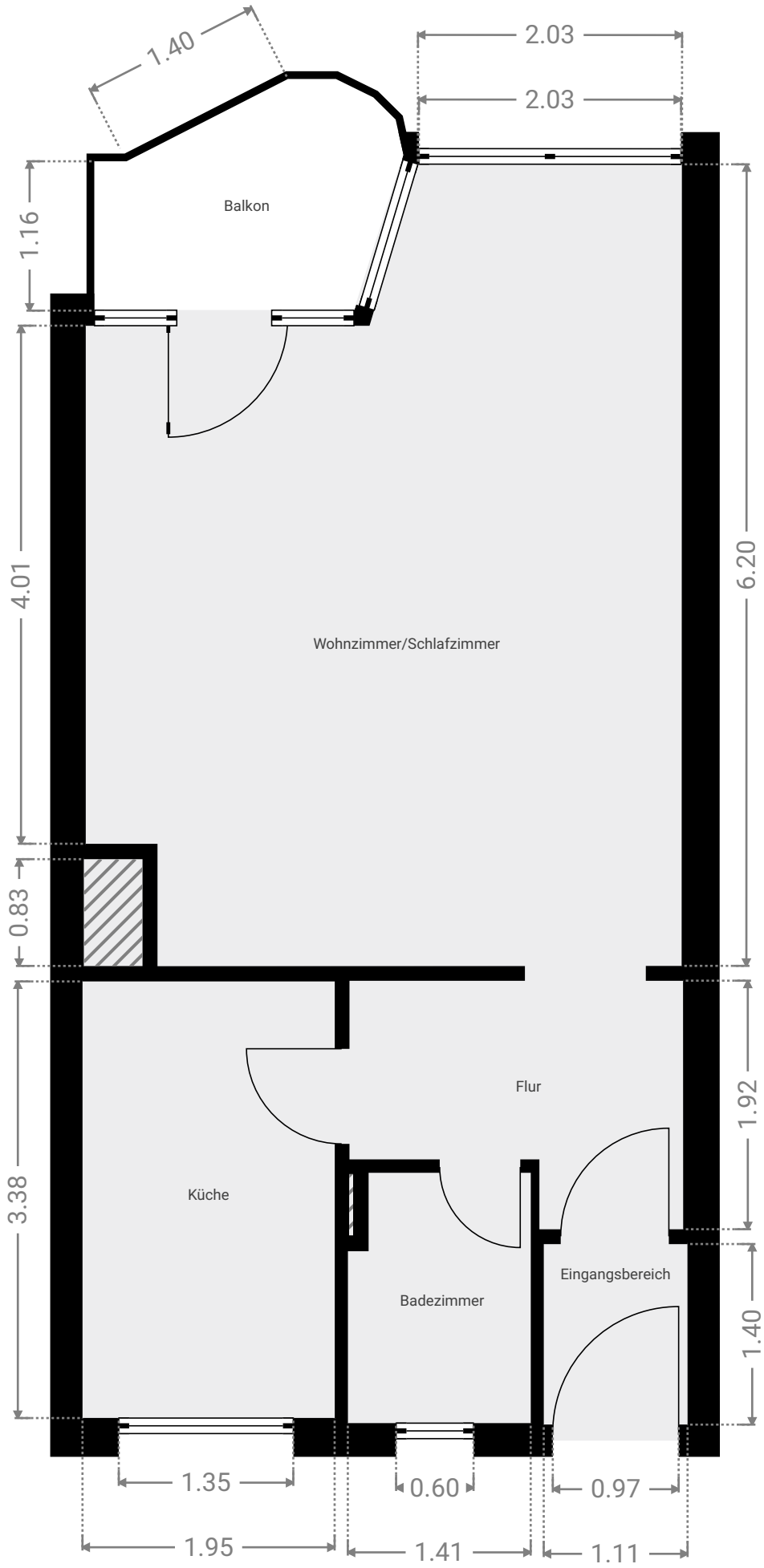
  
IMMOBILIENVERMESSUNG

Carsten Waberski  
Sachtlebenstr. 27  
14165 Berlin

Unterschrift

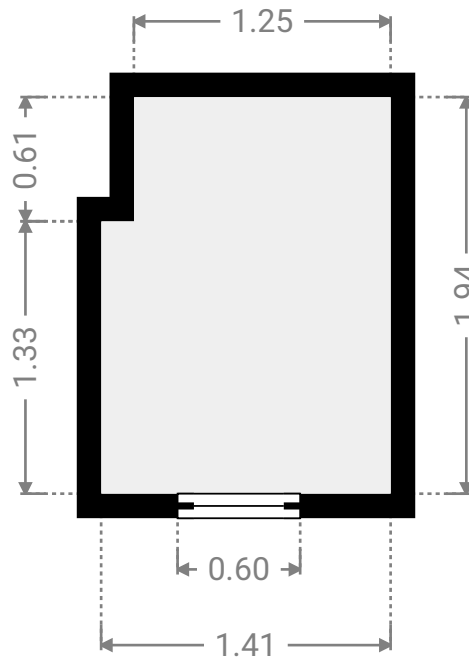
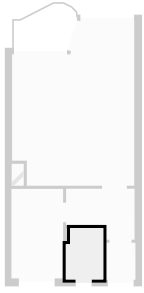


▼ 3. Stock



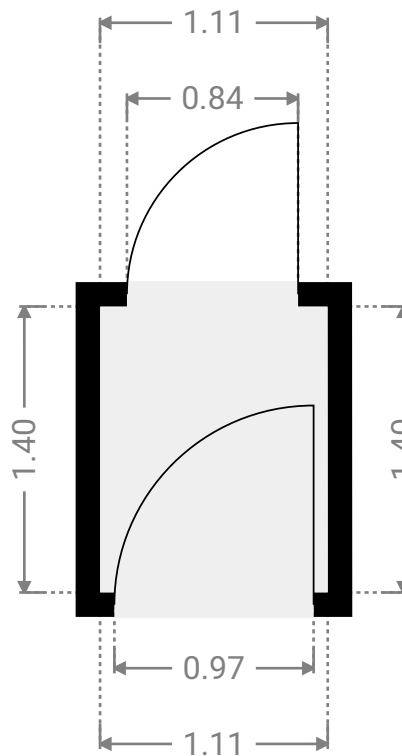
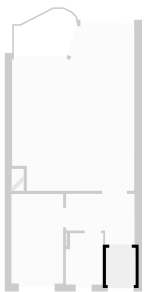
▼ **Badezimmer**  
3. Stock

BREITE: 1.41 m • LÄNGE: 1.94 m  
BEREICH: 2.64 m<sup>2</sup> • UMFANG: 6.71 m



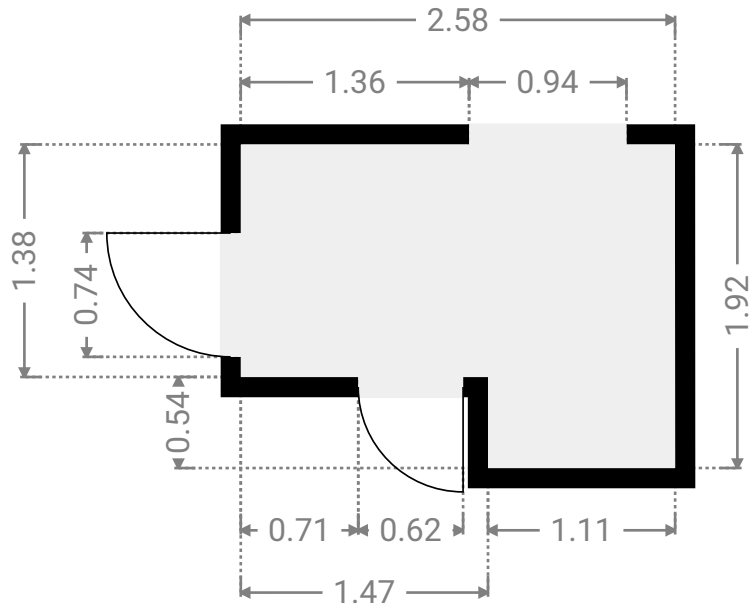
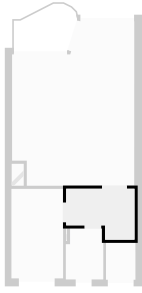
▼ **Eingangsbereich**  
3. Stock

BREITE: 1.11 m • LÄNGE: 1.40 m  
BEREICH: 1.55 m<sup>2</sup> • UMFANG: 5.02 m



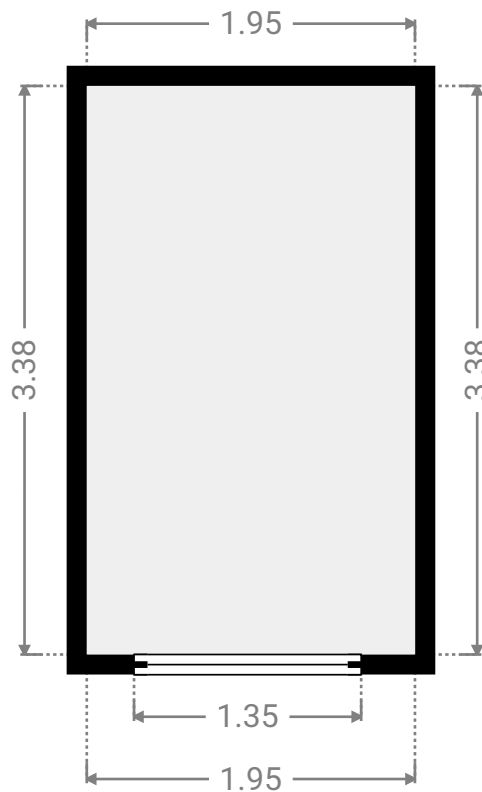
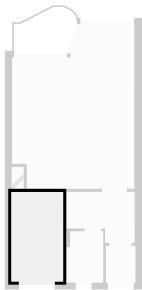
▼ Flur  
3. Stock

BREITE: 2.58 m • LÄNGE: 1.92 m  
BEREICH: 4.17 m<sup>2</sup> • UMFANG: 9.01 m



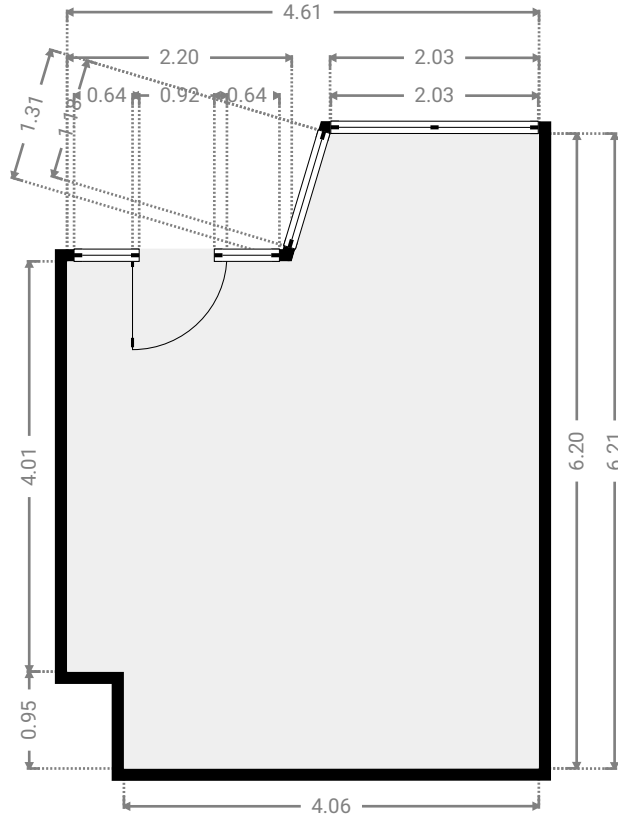
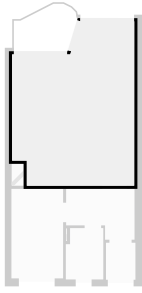
▼ Küche  
3. Stock

BREITE: 1.95 m • LÄNGE: 3.38 m  
BEREICH: 6.59 m<sup>2</sup> • UMFANG: 10.66 m



▼ **Wohnzimmer/Schlafzimmer**  
3. Stock

BREITE: 4.61 m • LÄNGE: 6.21 m  
BEREICH: 25.11 m<sup>2</sup> • UMFANG: 21.31 m



▼ **Balkon**  
3. Stock

BREITE: 2.39 m • LÄNGE: 1.79 m  
BEREICH: 3.42 m<sup>2</sup> • UMFANG: 7.30 m

