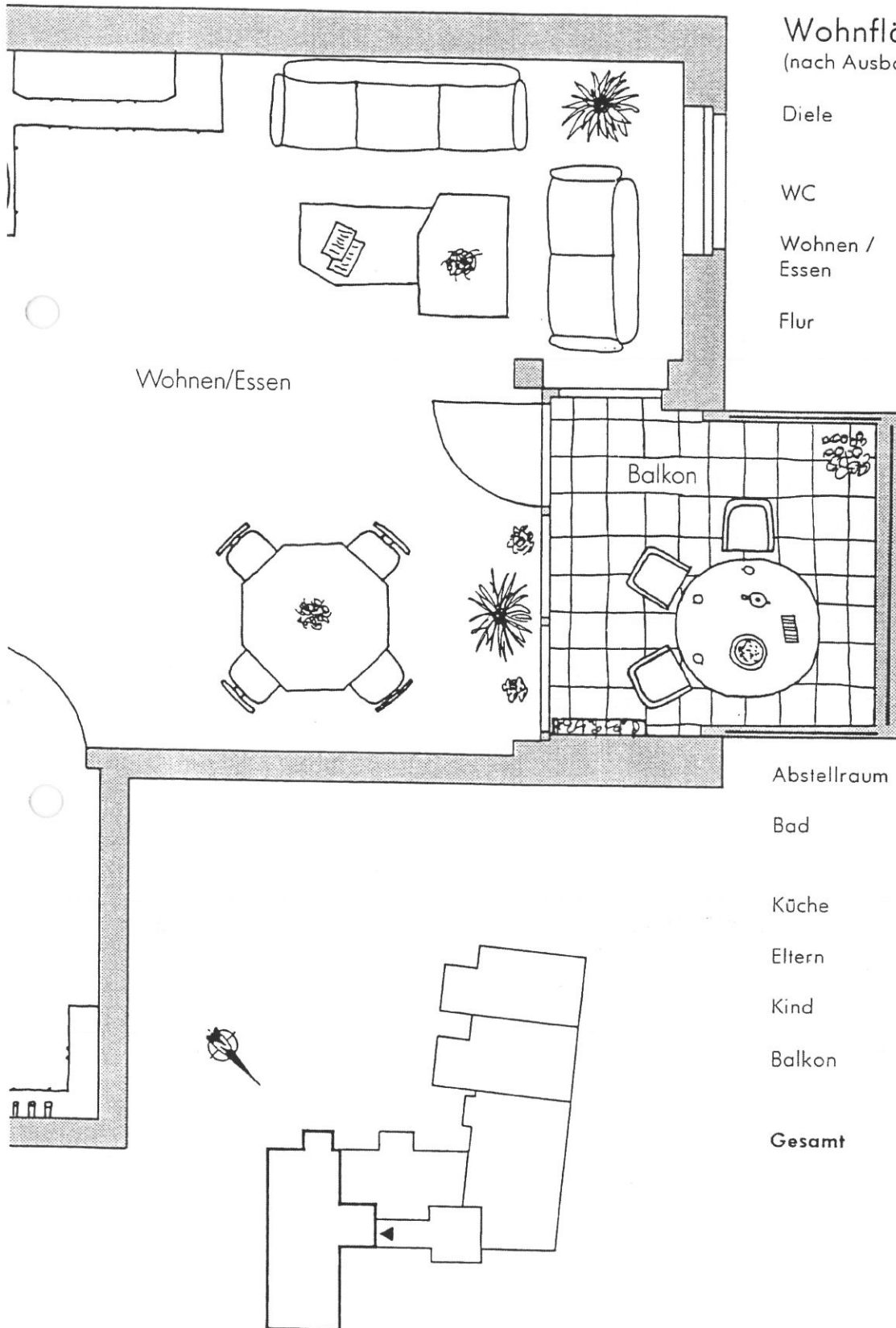


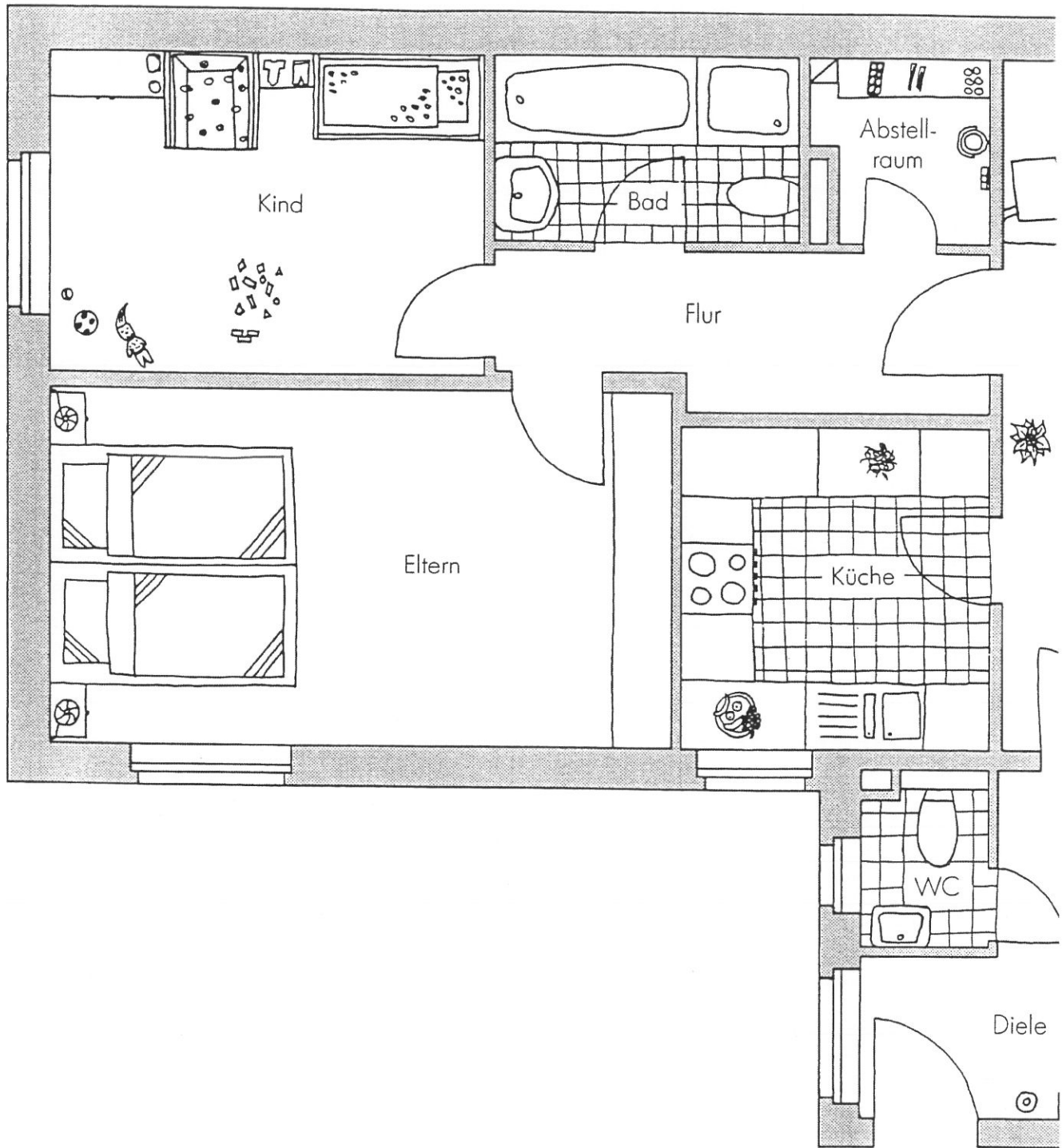
Wohnung 201



Wohnflächenberechnung (nach Ausbaumaßen)

| | | |
|-------------------|---|----------------------|
| Diele | 1,36 ⁵ x 2,92 ⁵ + | |
| | 1,35 x 1,06 ⁵ = | 5,43 m ² |
| WC | 1,49 ⁵ x 1,08 ⁵ = | 1,62 m ² |
| Wohnen / Essen | 4,85 ⁵ x 5,89 + | |
| | 2,53 x 1,45 = | 32,26 m ² |
| Flur | 2,58 x 1,35 ⁵ + | |
| | 1,67 ⁵ x 0,99 ⁵ = | 5,16 m ² |

| | | |
|---------------|---|----------------------------|
| Abstellraum | 1,58 ⁵ x 1,54 ⁵ = | 2,49 m ² |
| Bad | 2,63 x 1,58 ⁵ - | |
| | 0,85 x 0,26 = | 3,95 m ² |
| Küche | 2,72 ⁵ x 2,64 ⁵ = | 7,21 m ² |
| Eltern | 3,02 ⁵ x 5,34 ⁵ = | 16,17 m ² |
| Kind | 2,72 x 3,73 ⁵ = | 10,16 m ² |
| Balkon | 3,03 x 2,79 x | |
| | 0,50 = | <u>4,17 m²</u> |
| Gesamt | | 88,62 m² |



10

Q