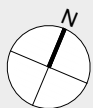
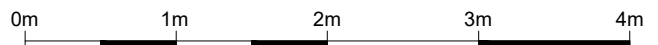
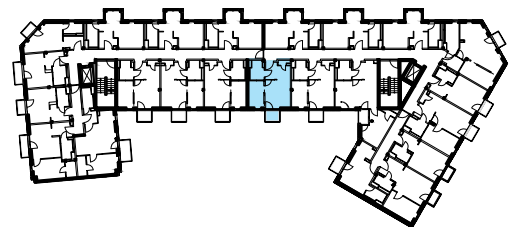


### Wohnung 1.14

Wohnen	12,62 m <sup>2</sup>
Schlafen	7,28 m <sup>2</sup>
Küche	3,75 m <sup>2</sup>
Bad	4,59 m <sup>2</sup>
Flur	3,26 m <sup>2</sup>
Abstellraum	0,88 m <sup>2</sup>
Balkon (A/2)	1,16 m <sup>2</sup>
<b>Gesamtfläche</b>	<b>33,54 m<sup>2</sup></b>



M 1:50

1.Obergeschoss

1.14

Parkae 15, Deutschmeisterstr. 28

Oktober 2019



Planungsteam Balzke Palinske GmbH