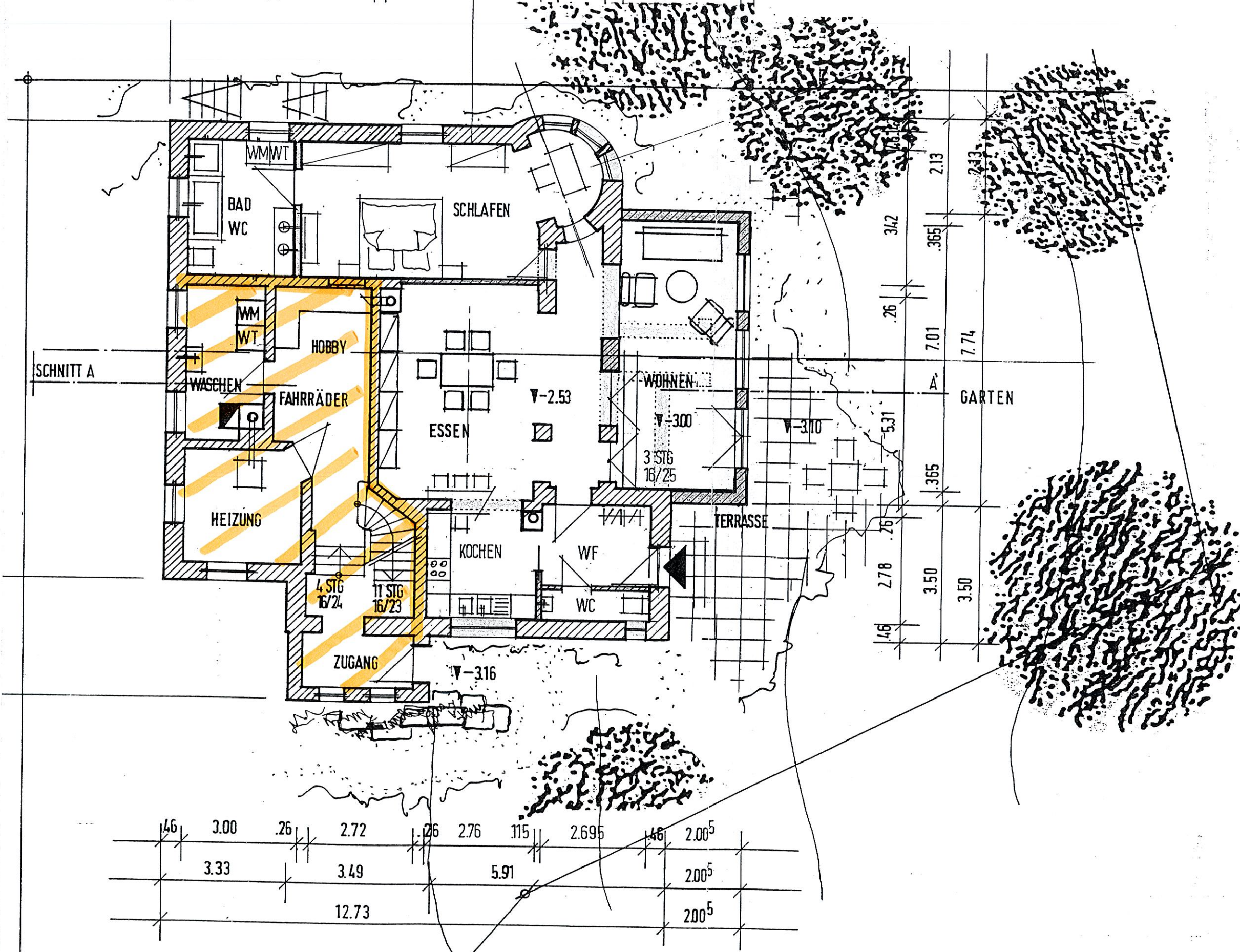


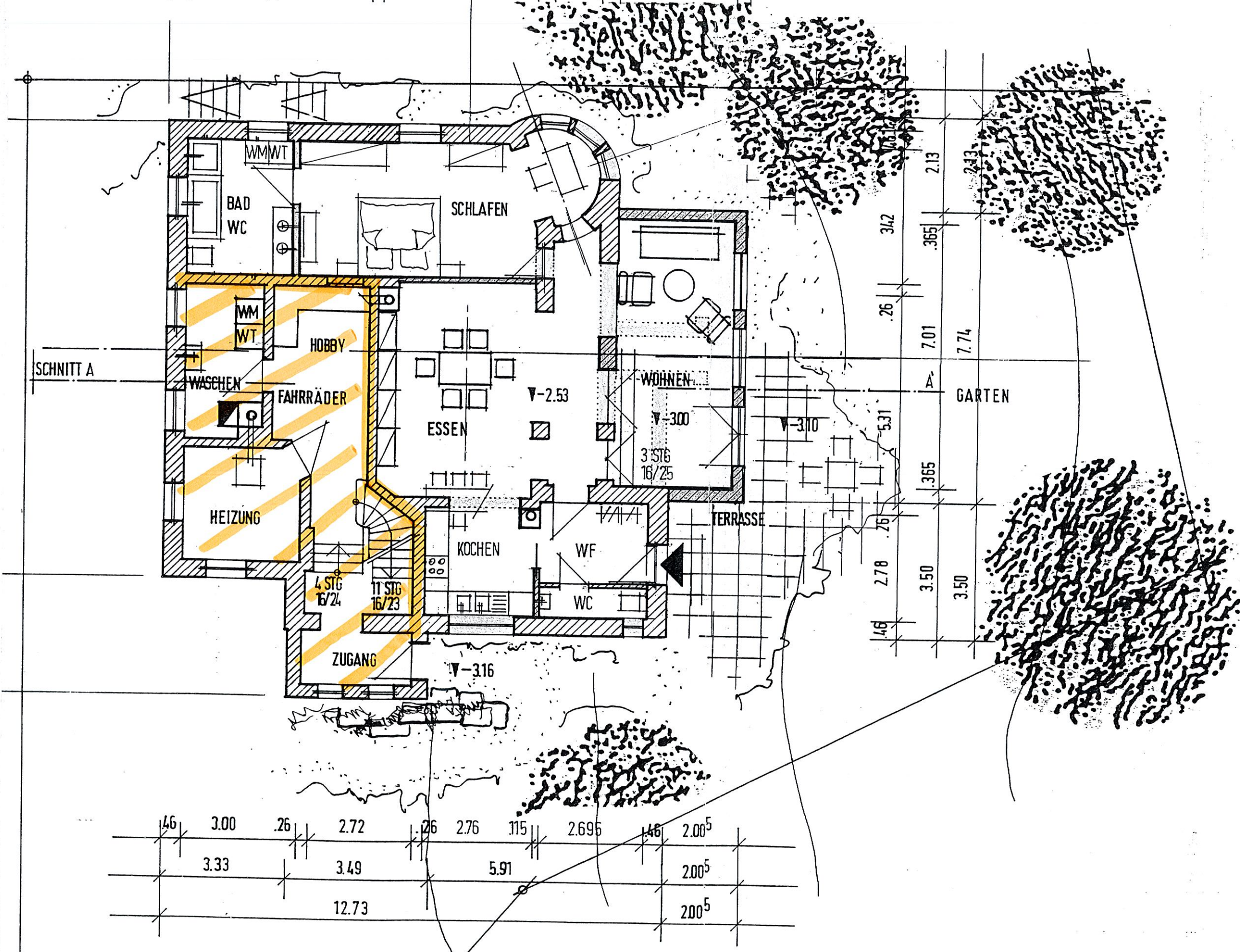
	8.70				2.66		3.375			
.46	2.635	.115	4.51	.115	1.355	.46	1.28	.43	3.375	
.46	1.95	.26	2.37	.26	3.89	.46	1.28	.43	3.01	.365



.46	3.00	.26	2.72	.26	2.76	.115	2.695	.46	2.00 ⁵
	3.33		3.49		5.91				2.00 ⁵
			12.73						2.00 ⁵

KELL

	8.70				2.66		3.375			
.46	2.635	.115	4.51	.115	1.355	.46	1.28	.43	3.375	
.46	1.95	.26	2.37	.26	3.89	.46	1.28	.43	3.01	.365



.46	3.00	.26	2.72	.26	2.76	.115	2.695	.46	2.00 ⁵
	3.33		3.49		5.91				2.00 ⁵
			12.73						2.00 ⁵

KELL